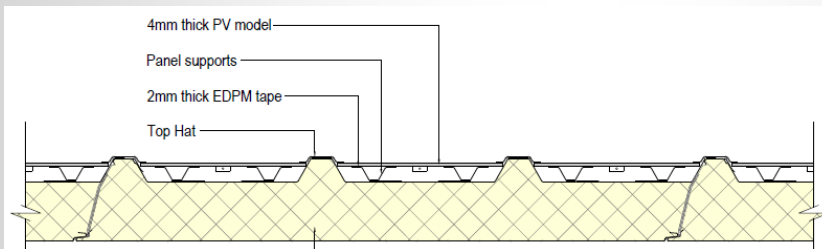
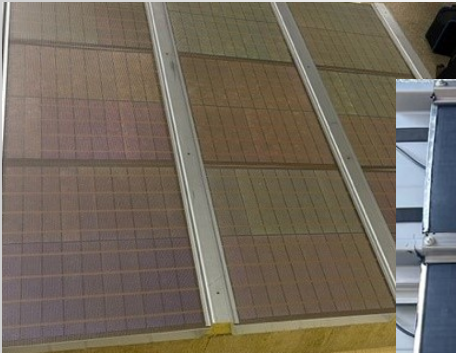


DELTA ENERGY

Lightweight PV Solar Solution for Trapezoidal Roofing



erg sun  **ERGOSUN HOLDINGS LLC**
428 WESTCOR DR.
CORALVILLE, IA 52241

Model: Ergosun 50W
Serial Number: EH50DEC23

Max. Power (P _w) +/- 5%	50.0W Tolerance: +/-3%	Power measured in the standard condition (STC). Irradiation 1000W/m ² AM = 1.5 Temp 25C
Open Circuit Voltage (V _{oc})	14.5V Tolerance: +/-3%	
Short circuit current (I _{sc})	4.58A Tolerance: +/-3%	Application Class A and Safety Class II per UL/CSA/IEC/EN 61730-2
Volt. at max. Power	12V	
Current at MPP (I _{mp})	4.17A	Tested and certified to harmonized IEC/UL 61730-2 & IEC 61215 standards
Current temp coefficient	0.05%	
Voltage temp coefficient	0.35%	
Power temp coefficient	0.35%	
Max series overcurrent protection device where required	20A	ATTENTION I L'attention ne se Never connect or connecte jamais ou disconnect under ne se deconnecte load current pas sous charge
Maximum System Voltage	600VDC	

CE: □ A

Available with PIR or Mineral Wool core Panels
Modular size fits within panel profile
No glass/ low glare modules
Textured surface increases yield in low light conditions
No glass means cooler operating temperature
Cut cell technology ensures highest yield's, and higher temperature tolerance
Cell efficiency is 21.3%
Air flow behind module helps with cooling
High voltage systems start inverters earlier, increasing operating hours
Bypass diode in rear increases shaded performance
Small modules are easily handled, loaded and stored
One man install (25 kg standard modules require 2 people)
One colour install across entire array, black modules with black profiles
Red modules optional (though only 15 watts)