



Business Line
Sandwichpanelen
by Cladding Point

BETA-PR PD

PIR hardfoam *(visible confirmation)*

Sandwich panels
Flat Roof Applications

Technical Information

BETA-PR PD

PIR hardfoam (visible confirmation)

Business Line
Sandwichpanelen
by Cladding Point



DISCOVER AND EXPERIENCE

BETA-PR PD is a visibly attached Flat Roof rigid foam sandwich panel from our Business Line range with a standard working width of 1150mm. The sandwich panel is available in a box (exterior) profiling and 2 (interior) profiling. This product is only suitable for bonding/screwing roofing. Discover the possibilities in Simplicity and Certainty.



For the Climate



Corporate Responsibility



Circular construction economy



Building Together

At Cladding Point, we take responsibility, which is why we work things that really matter. By using responsible materials in our sandwich panels, we strive for a Circular Construction Economy.

And how do we work with our suppliers? We make sure that we have a positive impact on everyone we do business with, based on fairness and equality.

We realize it won't be easy, but waiting is not an option. Together we are building a better future.

Working width

This product is available in a working width of 1150mm as standard and available in 1000mm on request.

Thermal efficiency

BETA-PR PD has a hard foam core with PIR technology. This with a density of 40kg/m³, completely HCFC-free. The insulation values of the sandwich panels have been calculated in accordance with NEN-EN 10211-1, NTA 8800 and EN 14509 (including fasteners, transition resistors and build quality correction factor).

Fire class

BETA-PR PD complies with the European fire classification B-s1-d0 (100-220mm) in accordance with EN 13501-1. This product is equipped with an FM approval rigid foam core.

Air permeability

The air permeability with regard to the seam connection in accordance with EN 12114.

	Positive (+)		Negative (-)
C	0,072	C	0,0028
n	0,6724	n	1,2407

C = Air flow coefficient
n = Air flow exponent

Based on the above assessment, we can conclude that the contribution of the sandwich panels, i.e. the mutual the total air permeability of a building.

In order to meet the requirements, it is particularly important that extra attention is paid to finishing the connection joints with other materials. You can think of window and door frames, penetrations, other façade and day openings, floor and roof connections and the like.

The Building Decree only sets requirements at building level. This is the so-called qv10 value. In other words, the leakage loss through the entire building envelope in dm³/s per m² of usable area.

There are therefore no specific requirements for the façade panels (individual materials). This product meets the requirements of the Building Decree.

Water

Water vapor chargeability is impermeable. Water permeability Class A-1200 Pa.

Statics

For a correct determination of the static capabilities of this product, please contact our technical department.

Management systems

The BETA-PR PD sandwich panels are produced under the following management system; EN ISO 9001.

General Certifications

BETA-PR PD is manufactured from the highest quality materials and meets the strictest standards and quality controls. This product is CE and Dibt (zulassung) certified.

Lengths

Product Lengths	Possible up to 16.000mm
Length (standard)	2.000mm - 13.500mm
Length* (not standard)	400mm - 2.000mm 13.500mm - 16.000mm

* Additional costs and transport surcharges may apply. Ask about the possibilities and conditions.

Tolerances

Joint Connection (2mm)	+2mm	-2mm
Length ≤3000mm	+5mm	-5mm
>3000mm	+10mm	-10mm
Working Width	+2mm	-2mm
Thickness (d) ≤100mm	+2mm	-2mm
(d) >100mm	+2%	-2%
Squareness (s)	<0,6%	

Tolerances are compliant EN 14509

Exterior coating

The base coating is polyester 25µm and suitable for standard indoor environments. This polyester (PE) interior coating can be used on façades, flat roofs and ceilings, related parts and accessories.

Standard coatings interior

The base coating is polyester 25µm and suitable for standard indoor environments. This polyester (PE) interior coating can be used on façades, roofs and ceilings, related parts and accessories. On request, the interior coating can also be made in a suitable coating for the food sector, agricultural sector, wet rooms and an aggressive environment. On request, this product is also available in stainless steel 304/316.

Total overview of coatings/colours

View all coatings and colour options in our colour palette.

Guarantee

Standard 10-year manufacturer's warranty on structural and thermal performance. Coating warranty with a possibility of up to 10 years (depending on the type of coating and project-specific information). Project-specific guarantees are possible and on request.

Supplies

Our deliveries from the Business Line are free of charge unloaded and are largely transported by road transport and are based on Lean and Green and Euro 6-7. Montage-instructies

Our assembly instructions can be downloaded from our website or available from Cladding Point Technical Services. The 3-D models are included in the Tekla library: www.tekla.com

Product Name

Product name of our manufacturer Pruszynski for this product is PWS PIR ST (100mm) and PWS PIR CH (120-220mm) is therefore mentioned as such on relevant certificates. Ask about the conditions and any additional costs for the above certifications.

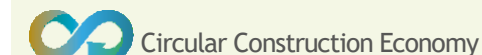
Roofing

Please note!

This product is only suitable for bonding and/or screwing roofing. It is not allowed to burn the roofing. This is due to the

Delamination of the outer plate of the sandwich panel.

General




Cladding Point believes it is important that the Circular Construction Economy is also measurable. That is why we have chosen to draw up an EPD for a large part of our products. An EPD (Environmental Product Declaration) gives the customer insight into how sustainable our sandwich panels are. In the Netherlands, we also use the EPDs to calculate how much environmental damage a building causes in relation to its surroundings. This is done in the environmental performance of buildings calculation, also known as the MPG.

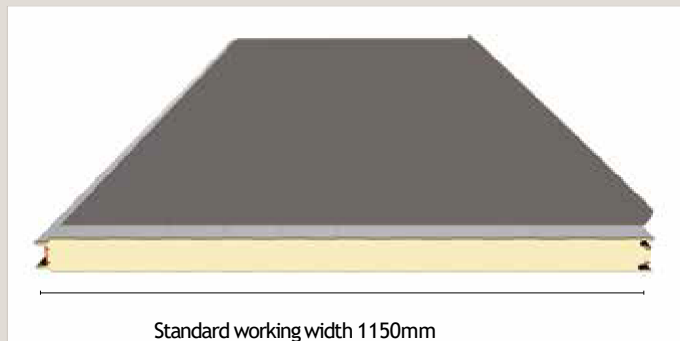
The sandwich panels of the Business Line PR are not included as standard in our Circular Construction Economy concept.

To advise you on this, you should always contact Cladding Point.

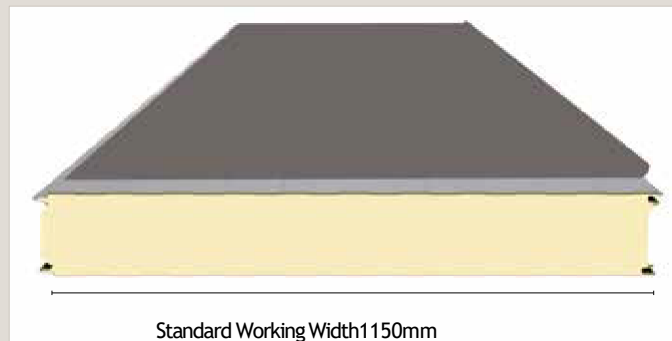
Technical Properties

BETA-PR PD	KV 					
Thickness (mm)	100	120	160	180	200	220
Total panel weight (kg/m ²)						
Outer plate thickness 0.5 mm	11,80	12,60	14,20	15,00	15,80	16,60
Inner plate thickness 0.5 mm						
Noise Reduction (Rw (C,Ctr) dB)	~25 (-3;-5)	~25 (-3;-5)	~25 (-3;-5)	~25 (-3;-5)	~25 (-3;-5)	~26 (-4;-5)
Rc-Value (m ² .K/W), NTA 8800	4,88	5,92	7,95	8,96	9,97	10,99

Cross section panel (thickness 100mm)



Cross section panel (120 - 220mm)



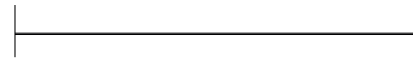
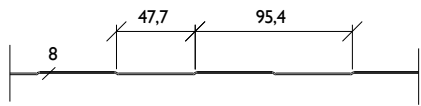
Connection (thickness 120 - 220mm)



Please note!
When installing the roofing material for fasteners, we always recommend pressure distribution plates (see page 6).

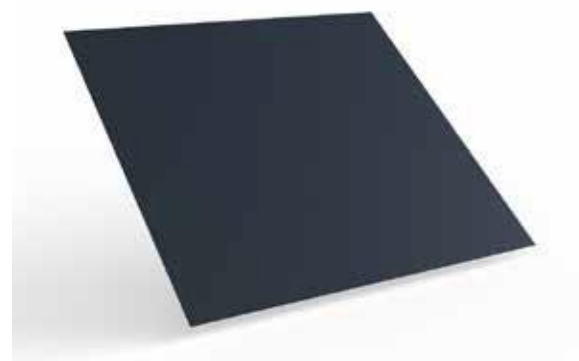
The Profiles

BETA-PR PD PIR hardfoam (visible confirmation)



BOX

UNPROFILED



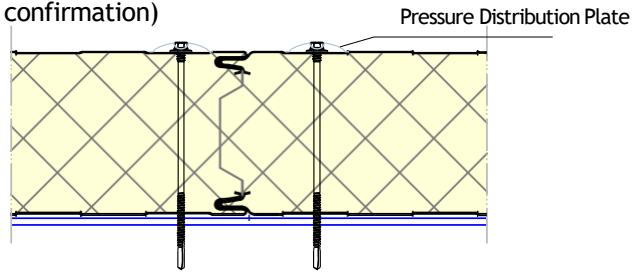
PROFILING	EXTERIOR A-SIDE	INTERIOR B-SIDE
Box	Yes	Yes
Unprofiled	Yes*	No

* On request.



Business Line
Sandwichpanelen
by Cladding Point

Confirmation (visible confirmation)

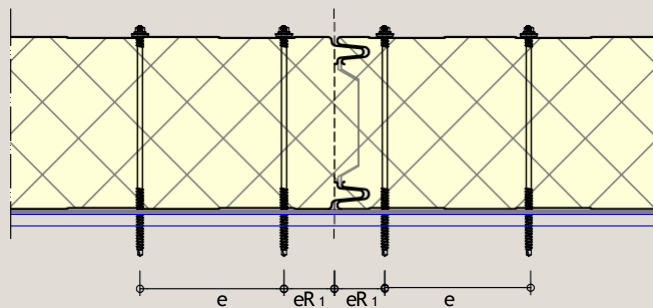
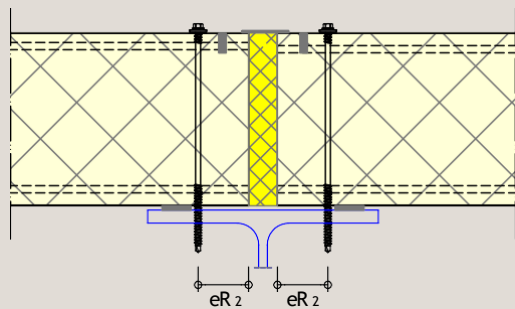


Pressure distribution plate shown is an example.

Confirmation methodology

Screw spacing	Distance between them (e)	From panel edge (eR)
Perpendicular to mounting direction (see illustration)	$\geq 100\text{mm}$	$\geq 50\text{mm}$ (eR ₁)
Parallel to mounting direction	H.o.h. remote support	$\geq 20\text{ mm} \ \& \ \geq 3d$ (eR ₂)

d: Screw Diameter



Roofing

Please note!

This product is only suitable for bonding and/or screwing roofing. It is not allowed to burn the roofing. This is due to the delamination of the outer plate of the sandwich panel.

BETA-PR PD PIR hardfoam (visible confirmation)







Want to know more?

Cladding Point is continuously improving and testing its products. New test results are added on a regular basis. Should the desired fire resistance with any associated conditions, which apply to your project are not included in the manual, please contact the technical department for the possibilities and/or the latest state of affairs. In many cases, we can offer you a suitable solution.

Business Line
Sandwichpanelen
by Cladding Point

Platinum Panel Systems
T: +44 (0) 1744 747 580
E: info@platinumpanelsystems.com

