



Business Line
Sandwichpanelen
by Cladding Point

ALPHA-PR FX

PIR hardfoam (concealed mounting)



Fire-resistant sandwich panels
Façade Applications

Technical Information

ALPHA-PR FX

PIR hardfoam (concealed mounting)

Business Line
Sandwichpanelen
by Cladding Point



DISCOVER AND EXPERIENCE

ALPHA-PR FX is a concealed fire-resistant hard foam sandwich panel from our Business Line range with a standard working width of 1050mm. The sandwich panel is available in 4 different (exterior) profiles and 2 (interior) profiles and can be used both vertically and horizontally. Discover the possibilities in Simplicity and Security.



For the climate



Responsible business



Circular Construction Economy



Building together

At Cladding Point we take responsibility, that's why we work hard on things that really matter. By using responsible materials in our sandwich panels, we strive for a Circular Construction Economy.

And how we work with our suppliers? We ensure that we have a positive impact on everyone we do business with, based on fairness and equality.

We realize that it will not be easy, but waiting is not an option. Together we build a better future.

Working width

This product is available as standard in a working width of 1050mm and on request in 1000mm.

Thermal efficiency

ALPHA-PR FX has a fire-resistant hard foam core with PIR technology. This with a density of 40kg/m³, completely HCFC-free. The insulation values of the sandwich panels have been calculated in accordance with NEN-EN 10211-1, NTA 8800 and EN 14509 (including fasteners, transition resistances and construction quality correction factor).

Fire class

ALPHA-PR FX complies with the European fire classification B-s2-d0 (100mm) and B-s1-d0 (120mm) in accordance with EN 13501-1. This product is equipped with an FM approval hard foam core.

Fire resistance

For more information about the fire performance of the ALPHA-PR FX sandwich panel; see conditions table on page 4.

Air permeability

The air permeability with regard to the seam connection in accordance with EN 12114.

	Positive (+)		Negative (-)
C	0,086	C	0,1616
n	0,6638	n	0,5103

C = Air flow coefficient
n = Air flow exponent

A.d.h.v. the above assessment we can conclude that the contribution of the sandwich panels,

i.e. the mutual seam connection, the total air permeability of a building is limited.

To meet the requirements, it is particularly important that extra attention is paid to finishing the connecting joints with other materials. This includes window and door frames, penetrations, other facade and day openings, floor and roof connections and the like.

The building decree only sets requirements at building level. This concerns the so-called qv10 value. I.e. the leakage loss through the complete building envelope in dm³/s per m² of usable area.

There are therefore no specific requirements for the facade panels (individual materials). This product meets the requirements in accordance with the Building Decree.

Water

Water vapor permeability is impermeable. Water permeability Class A-1200 Pa.

Statics

To correctly determine the static capabilities of this product, please contact our technology department. We recommend that you use pressure distribution plates during installation.

Management systems

The ALPHA-PR FX sandwich panels are produced under the following management system: EN ISO 9001.

General certifications

ALPHA-PR FX is manufactured from the highest quality materials and meets the strictest standards and quality controls. This product is CE and Dibt (zulassung) certified.

Length

Product Lengths	Possible up to 16.000mm
Length (standard)	2.000mm – 13.500mm
Length* (not standard)	400mm – 2.000mm 13.500mm – 16.000mm

* Additional costs and transport surcharges may apply. Ask about the options and conditions.

Tolerances

Façade Connection (2mm)	+2mm	-2mm
Length	≤3000mm	+5mm
	>3000mm	+10mm
Working width	+2mm	-2mm
Thickness (d)	≤100mm	+2mm
	>100mm	+2%
Squareness (s)	<0,6%	

Tolerances are in accordance with EN 14509

Exterior coatings

Terracoat 27µm is a durable and aesthetically pleasing product and delivers good performance. The UV resistance (RUV3) and increased corrosion protection (RC3) ensure good colour retention.

Granite® HDX (type G) 55µm is a technical, durable and aesthetically high-quality product and delivers very good performance. Excellent UV resistance (RUV4) and increased corrosion protection (RC5) ensure excellent colour retention.

Standard interior coatings

The base coating is polyester 25µm and suitable for standard indoor environments. This interior coating made of polyester (PE) can be used on facades, roofs and ceilings, related parts and accessories.

The interior coating can also be carried out on request in a suitable coating for the food sector, agricultural sector, wet areas and an aggressive environment. On request, this product is also available in stainless steel 304/316.

Complete overview of coatings/colours

View all coatings and colour options in our colour palette.

Guarantee

Standard 10 year manufacturer's warranty on structural and thermal performance. Coating warranty with a possibility of up to 40 years (depending on the type of coating and project-specific information).

Project-specific guarantees are possible and upon request.

Deliveries

Our deliveries from the Business Line are unloaded free of charge and are largely transported by road transport and are based on Lean and Green and Euro 6-7.

Assembly instructions

Our installation instructions can be downloaded from our website or available from Cladding Point Technical Services. The 3-D models are included in the Tekla library: www.tekla.com

Product name

Product name of our manufacturer Pruszynski for this product is PWS PIR PL and is stated as such on the relevant certificates. Ask about the conditions and possible additional costs for the above-mentioned certifications.



Circular Construction Economy

Cladding Point believes it is important that the Circular Construction Economy is also measurable. That is why we have chosen to draw up an EPD for a large portion of our products.

An EPD (Environmental Product Declaration) gives the customer insight into how sustainable our sandwich panels are. In the Netherlands we also use the EPDs to calculate how much environmental damage a building causes compared to its surroundings. This is done in the environmental performance for buildings calculation, also known as the MPG.

The Business Line PR sandwich panels are not included in our Circular Construction Economy concept.

The sandwich panels from Business Line ARpanel and Brucha can provide the desired solution for reducing the environmental damage of your building.

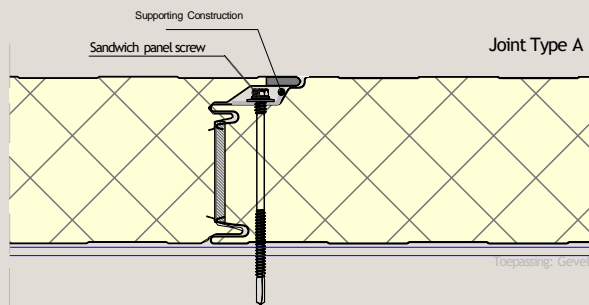
What is special is that these products have an EPD with a category I card that complies with the regulations of the RVO. This is the highest achievable level. If you apply this in a circular building you can achieve substantial tax benefits. You should always contact Cladding Point for advice on this.

Fire-resistant Properties

Panel Type	Thick ness [mm]	Fire Reistance [EN 13501-2]			Max. overspanning [mm.]* [EN 14509]			Mutual joint connection		
		Facade	Partition Wall	Ceiling	Horizontal	Vertical	Ceiling	Horizontal	Vertical	Ceiling
ALPHA-PR FX EN 13501-1 Fire Class B-s1-d0	Heating direction from inside to outside (i → o)									
	≥ 120	EI 15	EI 15	-	7.500	-	-	JointType A	-	-
		EW 20	EW 20	-	7.500	-	-	JointType A	-	-
		-	EI 20	-	7.500	-	-	JointType A	-	-
		EW 30	EW 30	-	7.500	-	-	JointType A	-	-
		EI 30	EI 30	-	7.500	-	-	JointType A	-	-
	Heating direction from outside to inside (o → i)									
	≥ 120	EI 15ef	-	-	7.500	-	-	JointType A	-	-
		EW 30ef	-	-	7.500	-	-	JointType A	-	-
		EI 30ef	-	-	7.500	-	-	JointType A	-	-
EW 60ef		-	-	6.000	-	-	JointType A	-	-	
EI 60ef		-	-	4.000	-	-	JointType A	-	-	

* Concerns max. fire-resistant spans. Static overvoltages must be tested separately.

Mutual joint connection

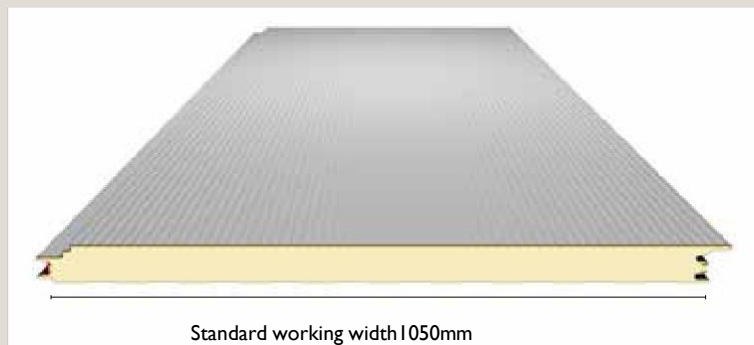


Technical Properties

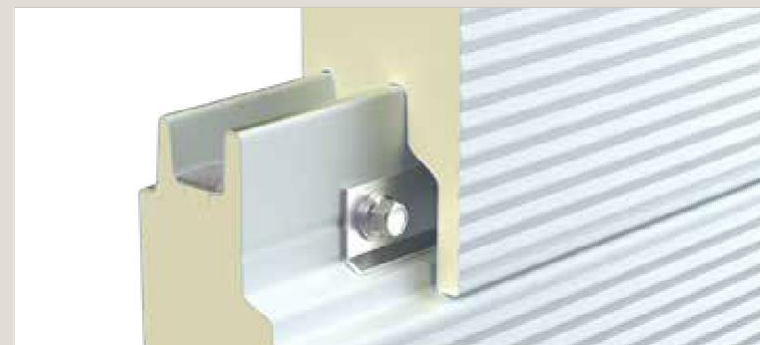
ALPHA-PR FX	
Thickness (mm)	120
Total panel weight (kg/m ²)	12,60
Outer plate thickness 0.5 mm	
Inner plate thickness 0.5 mm	
Noise Reduction (Rw (C,Ctr) dB)	~25 (-3;-5)
Rc-Value (m ² .K/W), NTA 8800	5,72



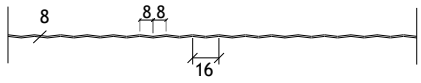
Cross Section Panel



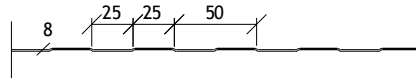
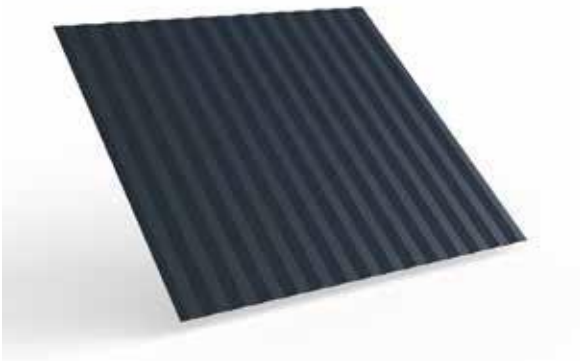
Connection (concealed mounting)



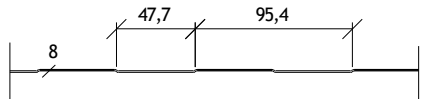
Profiling



RIB 16



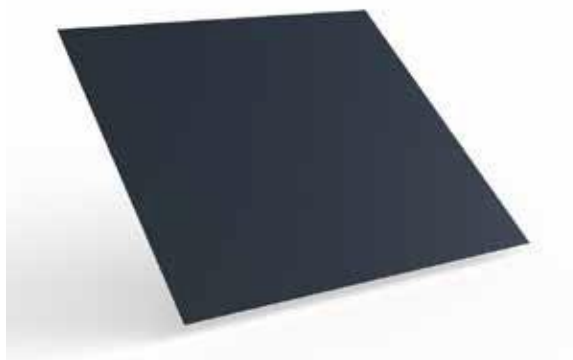
MINIBOX



BOX



UNPROFILED



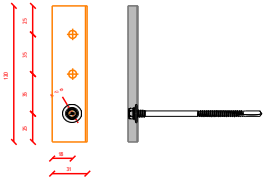
PROFILING	EXTERIOR	INTERIOR
Rib 16	Yes	No
Minibox	Yes	No
Box	Yes	No
Unprofiled	No	No*

* On request.

ALPHA-PR FX PIR hardfoam (concealed mounting)

Initial Laying-up:

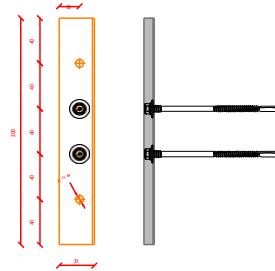
Minimum distance from the first screw to the panel edge $E_r = 25$ mm



Pressure distribution plate Alpha-PR FX
Dimensions: 120* 31* 9* 1,5
Item no.: 1008906

Interim Imposition:

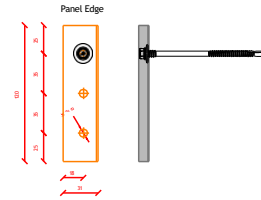
- Screws into the middle two holes of the pressure distribution plate
- If it is a cantilever, it is assessed as an intermediate support



Pressure distribution plate Alpha-PR FX
Dimensions: 200* 31* 9* 1,5
Item no.: 1009059

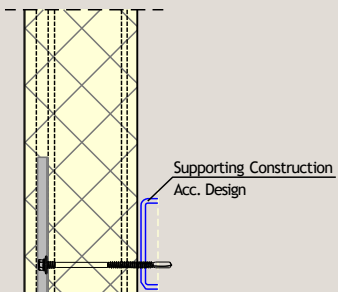
Final Impositions:

Minimum distance from the first screw to the panel edge $E_r = 25$ mm



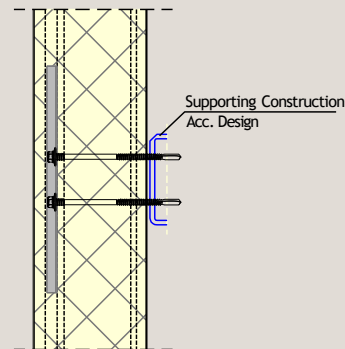
Pressure Distribution plate Alpha-PR FX
Dimensions: 120* 31* 9* 1,5
Item no.: 1008906

Initial Laying-up:

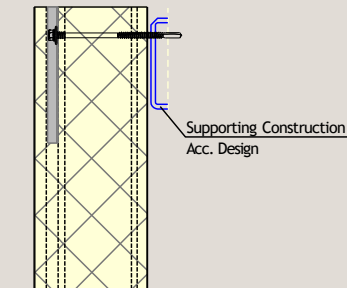


Interim Imposition:

$E_r = 500$ mm (minimum)

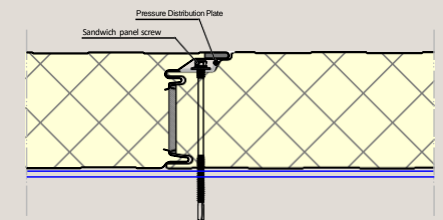


Final Impositions:



Mounting:

(concealed mounting)







Do you want to know more?

Cladding Point is continuously improving and testing its products. New test results are added on a regular basis. Should the desired specifications, with any associated conditions, apply to your project applies, are not included in the manual, please contact the technical department for the options and/or the latest status. In many cases we can offer you a suitable solution.

Business Line
Sandwichpanelen
by Cladding Point

Platinum Panel Systems Ltd
T: +44 (0) 1744 747 580
E: info@platinumpanelsystems.com

