



**Business Line**  
Sandwichpanelen  
*by Cladding Point*

## PREMIUM CARRIER

PIR hard foam (concealed and visible mounting)

Sandwich panels  
Facade applications | **Technical information**

# PREMIUM CARRIER

PIR hard foam (concealed and visible mounting)

**Business Line**  
Sandwichpanelen  
*by Cladding Point*



DISCOVER AND EXPERIENCE  
PREMIUM ALPHA-AR FX / BETA-AR (KV) CARRIER its Business Line rigid foam sandwich panels. In addition to the advantages of building with insulated sandwich panels, these products offer freedom in aesthetic appearance. These sandwich panels have been developed for use in combination with a hanging system of different types to be able to install facades that can give the building its own identity. With the correct calculations, advice and installation you can realize a secondary facade cladding (including rail system). Always consult our technical department for this. With this product we contribute to the Circular Construction Economy. Discover the possibilities in Simplicity and Security.



For the climate



Responsible business



Circular Construction Economy



Building together

At Cladding Point we take responsibility, that's why we work hard on things that really matter. By using responsible materials in our sandwich panels, we strive for a Circular Construction Economy. And how we work with our suppliers? We ensure that we have a positive impact on everyone we do business with, based on fairness and equality. We realize that it will not be easy, but waiting is not an option. Together we build a better future.



### Working width

This product is available as standard in a working width of 1000mm and on request in 900mm.

### Thermal efficiency

PREMIUM ALPHA-AR FX CARRIER has a hard foam core with PIR technology. This with a density of 40kg/m<sup>3</sup>, completely HCFC-free. The insulation values of the sandwich panels have been calculated in accordance with NEN-EN 10211-1, NTA 8800 and EN 14509 (including fasteners, transition resistances and construction quality correction factor).

### Fire class

PREMIUM ALPHA-AR FX CARRIER complies with the European fire classification B-s1-d0 in accordance with EN 13501-1. This product is equipped with an FM approval hard foam core.

### Fire resistance

For more information about the fire performance of the PREMIUM ALPHA-AR FX CARRIER sandwich panel; see conditions table on page 4.

### Air permeability

The air permeability with regard to the seam connection in accordance with EN 12114.

	Positive(+)		Negative (-)
C	0,1136	C	0,2451
n	0,2931	n	0,1187

C = Air flow coefficient  
n = Air flow exponent

A.d.h.v. the above assessment we can conclude that the contribution of the sandwich panels, i.e. the mutual seam connection, the total air permeability of a building is limited. To meet the requirements, it is particularly important that extra attention is paid to finishing the connecting joints with other materials. This includes window and door frames, penetrations, other facade and day openings, floor and roof connections and the like. The building decree only sets requirements at building level. This concerns the so-called qv10 value. I.e. the leakage loss through the complete building envelope in dm<sup>3</sup>/s per m<sup>2</sup> of usable area.

There are therefore no specific requirements for the facade panels (individual materials). This product meets the highest requirements in accordance with the Building Decree.

### Water

Water vapor permeability is impermeable. Water permeability Class A-1200 Pa.

### Statics

To correctly determine the static capabilities of this product, please contact our technology department. This product must be visibly attached where the aesthetic peel is applied.

### Environment

The PREMIUM ALPHA-AR FX CARRIER sandwich panels can be used in the Environmental Performance calculation. The data for this can be found in the National Environmental Database at [www.milieudatabase.nl](http://www.milieudatabase.nl). We also have the BES 6001 (Excellent) certificate. Ask for the possibilities.

### Management systems

The PREMIUM ALPHA-AR FX CARRIER sandwich panels are produced under the following management systems; EN ISO 9001, EN ISO 45001 and EN ISO 14001.



### Circular Construction Economy

Cladding Point believes it is important that the Circular Construction Economy is also measurable. That is why we have chosen to draw up an EPD for our products. An EPD (Environmental Product Declaration) gives the customer insight into how sustainable our sandwich panels are. In the Netherlands we also use the EPDs to calculate how much environmental damage a building causes compared to its surroundings. This is done in the environmental performance for buildings calculation, also known as the MPG.

By selecting this sandwich panel you reduce the environmental damage of your building. What is special is that our products have an EPD with a category 1 card that complies with the regulations of the RVO. This is the highest achievable level. When you apply this product in a circular building you can achieve substantial tax benefits. Ask for the possibilities.



If you choose this sandwich panel in combination with our circular Cirpa® concept, you will reduce costs considerably the environmental damage and you will achieve a better result in an MPG calculation. By adopting circularity show that we achieve the highest possible level in the field of sustainability! This unique data is included in a unique EPD sheet that belongs to this product as soon as you choose the Cirpa® concept. When you apply this sandwich panel in a circular building, the building owner can directly achieve substantial tax benefits through the MIA subsidy from the RVO. The Cirpa® concept does not apply to this product as standard. Ask about the options or visit [www.cirpa.nl](http://www.cirpa.nl).

### General certifications

PREMIUM ALPHA-AR FX CARRIER is manufactured from the highest quality materials and meets the strictest standards and quality controls. This product is CE and Dibt (zulassung) certified.

### Lengths

Production lengths	Possible up to 18.500mm
Length (standard)	2.000mm – 13.500mm
Length* (non standard)	400mm – 2.000mm 13.500mm – 18.500mm

\* Additional costs and transport surcharges may apply. Ask about the options and conditions.

### Tolerances

Joint connection (2mm)	+2mm	-2mm
Length ≤3000mm	+5mm	-5mm
>3000mm	+10mm	-10mm
Working width	+2mm	-2mm
Thickness (d) ≤100mm	+2mm	-2mm
(d) >100mm	+2%	-2%
Squareness (s)	<0,6%	

Tolerances are in accordance with EN 14509

### Exterior coatings

Terracoat 27µm is a durable and aesthetically pleasing product and delivers good performance. The UV resistance (RUV3) and increased corrosion protection (RC3) ensure good colour retention.

Granite® HDX (type G) 55µm is a technical, durable and aesthetically high-quality product and delivers very good performance. Excellent UV resistance (RUV4) and increased corrosion protection (RC5) ensure excellent colour retention.

### Standard interior coatings

The base coating is polyester 25µm and suitable for standard indoor environments. This interior coating made of polyester (PE) can be used on facades, roofs and ceilings, related parts and accessories. The interior coating can also be carried out on request in a suitable coating for the food sector, agricultural sector, wet areas and an aggressive environment. On request, this product is also available in stainless steel 304/316.

### Complete overview of coatings/colours

View all coatings and colour options in our colour palette.

### Guarantee

Standard 10 year manufacturer's warranty on structural and thermal performance. Coating warranty with a possibility of up to 40 years (depending on the type of coating and project-specific information). Project-specific guarantees are possible and upon request.

### Deliveries

Our deliveries from the Business Line are unloaded free of charge and are largely transported by road transport and are based on Lean and Green and Euro 6-7.

### Assembly instructions

Our installation instructions can be downloaded from our website or available from Cladding Point Technical Services. The 3-D models are included in the Tekla library: [www.tekla.com](http://www.tekla.com)

### Product name

The product name of our manufacturer AR panel for this product is SU PIR and is stated as such on the relevant certificates. Ask about the conditions and possible additional costs for the above-mentioned certifications.

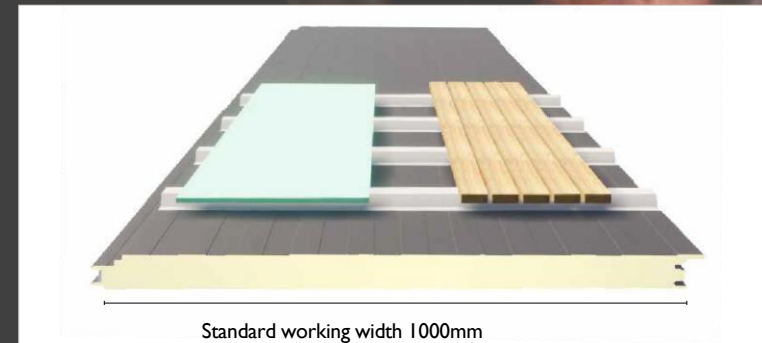
Fire resistant properties

Type panel	Thick ness [mm]	Fire resistance [EN 13501-2]		Max. span [mm.]* [EN 14509]	
		Facade	Partition wall	Horizontal	Vertical
<b>PREMIUM ALPHA-AR FX CARRIER</b> EN 13501-1 Brandklasse B-s1-d0	Heating direction from inside to outside (i o)				
	≥ 100	EI 15	EI 15	-	4.000
		EW 20	EW 20	-	4.000
		-	EI 20	-	4.000
	≥ 120	EW 30	EW 30	-	7.500
		EI 30	EI 30	-	7.500

Always ask about the conditions regarding installation and/or fire reporting.

\*Concerns max. fire-resistant spans. Static overvoltage's must be tested separately.

((advice: use vertical mounting))



Technical properties

**PREMIUM ALPHA-AR FX CARRIER**

Thickness (mm)	60	80	100*	120*
Total panel weight (kg/m2)				
Outer plate thickness 0.6 mm	11,00	11,70	12,50	13,20
Inner plate thickness 0.5 mm				
Noise Reduction (Rw (C,Ctr) dB)	~25 (-2;-4)	~25 (-2;-4)	~25 (-2;-4)	~25 (-2;-4)
Rc-value (m².K/W), NTA 8800	2,40	3,64	4,70	5,72

\* Fire resistance applies to thickness 100 and 120 mm..

### Working width

This product is available as standard in a working width of 1150mm and on request in 1100mm and 1000mm.

### Thermal efficiency

PREMIUM BETA-AR (KV) CARRIER has a hard foam core with PIR technology. This with a density of 40kg/m<sup>3</sup>, completely HCFC-free. The insulation values of the sandwich panels have been calculated in accordance with NEN-EN 10211-1, NTA 8800 and EN 14509 (including fasteners, transition resistances and construction quality correction factor).

### Fire class

PREMIUM BETA-AR (KV) CARRIER complies with the European fire classification B-s1-d0 in accordance with EN 13501-1. This product is equipped with an FM approval hard foam core.

### Fire resistance

The PREMIUM BETA-AR (KV) CARRIER panel is standard in an FX fire-resistant version (60-200mm). These products are basically fire-resistant certified (see BETA-AR (KV) FX). If this product is used as a carrier system, this is not covered in the standards. Fire resistance must be discussed on a project-by-project basis with our technical department.

### Air permeability

The air permeability with regard to the seam connection in accordance with EN 12114.

	Positive (+)		Negative (-)
C	0,2630	C	0,0227
n	0,5313	n	0,4764

C = Air flow coefficient

n = Air flow exponent

A.d.h.v. the above assessment we can conclude that the contribution of the sandwich panels, i.e. the mutual seam connection, the total air permeability of a building is limited.

To meet the requirements, it is particularly important that extra attention is paid to finishing the connecting joints with other materials. This includes window and door frames, penetrations, other facade and day openings, floor and roof connections and similar.

The building decree only sets requirements at building level. This concerns the so-called qv10 value. I.e. the leakage loss through the complete building envelope in dm<sup>3</sup>/s per m<sup>2</sup> of usable area. There are therefore no specific requirements for the facade panels (individual materials). This product meets the highest requirements in accordance with the Building Decree.

### Water

Water vapor permeability is impermeable. Water permeability Class A-1200 Pa.

### Statics

To correctly determine the static capabilities of this product, please contact our technology department.

### Environment

The PREMIUM BETA-AR (KV) CARRIER sandwich panels can be used in the Environmental Performance calculation. The data for this can be found in the National Environmental Database at [www.milieudatabase.nl](http://www.milieudatabase.nl). We also have the BES 6001 (Excellent) certificate. Ask for the possibilities.

### Management systems

The PREMIUM BETA-AR (KV) CARRIER sandwich panels are produced under the following management systems; EN ISO 9001, EN ISO 45001 and EN ISO 14001..



### Circular Construction Economy

Cladding Point believes it is important that the Circular Construction Economy is also measurable. That is why we have chosen to draw up an EPD for our products. An EPD (Environmental Product Declaration) gives the customer insight into how sustainable our sandwich panels are. In the Netherlands we also use the EPDs to calculate how much environmental damage a building causes compared to her environment. This is done in the environmental performance for buildings calculation, also known as the MPG.

By selecting this sandwich panel you reduce the environmental damage of your building. What is special is that our products have an EPD with a category 1 card that complies with the regulations of the RVO. This is the highest achievable level. When you apply this product in a circular building you can achieve substantial tax benefits. Ask for the possibilities.



If you choose this sandwich panel in combination with our circular Cirpa® concept, you will significantly reduce environmental damage and achieve a better result in an MPG calculation. By demonstrating circularity, we achieve the highest achievable level in the field of sustainability! This unique data is included in a unique EPD sheet that belongs to this product as soon as you choose the Cirpa® concept. When you use this sandwich panel in a circular building, the building owner can directly obtain a substantial tax benefit through the MIA subsidy from the RVO. The Cirpa® concept does not apply to this product as standard. Ask about the options or visit [www.cirpa.nl](http://www.cirpa.nl).

### General certifications

PREMIUM BETA-AR (KV) CARRIER is manufactured from the highest quality materials and meets the strictest standards and quality controls. This product is CE and Dibt (zulassung) certified.

### Lengths

Product length	Possible up to 18.500mm
Length (standard)	2.000mm – 13.500mm
Length * (non standard)	400mm – 2.000mm 13.500mm – 18.500mm

\* Additional costs and transport surcharges may apply. Ask about the options and conditions.

### Tolerances

Joint connection (2mm)	+2mm	-2mm
Length ≤3000mm	+5mm	-5mm
>3000mm	+10mm	-10mm
Working width	+2mm	-2mm
Thickness (d)≤100mm	+2mm	-2mm
m	+2%	-2%
(d)>100mm		
Squareness (s)	<0,6%	

Tolerances in allowance with EN 14509

### Standard exterior coatings

The base coating is polyester 25µm and suitable for standard indoor environments. This interior coating made of polyester (PE) can be used on facades, roofs and ceilings, related parts and accessories.

The interior coating can also be carried out on request in a suitable coating for the food sector, agricultural sector, wet areas and an aggressive environment. On request, this product is also available in stainless steel 304/316.

Terracoat 27µm is a durable and aesthetically pleasing product and delivers good performance. The UV resistance (RUV3) and increased corrosion protection (RC3) ensure good colour retention.

Granite® HDX (type G) 55µm is a technical, durable and aesthetically high-quality product and delivers very good performance. Excellent UV resistance (RUV4) and increased corrosion protection (RC5) ensure excellent colour retention.

### Standard interior coatings

The base coating is polyester 25µm and suitable for standard indoor environments. This interior coating made of polyester (PE) can be used on facades, roofs and ceilings, related parts and accessories.

The interior coating can also be carried out on request in a suitable coating for the food sector, agricultural sector, wet areas and an aggressive environment. On request, this product is also available in stainless steel 304/316.

### Complete overview of coatings/colours

View all coatings and colour options in our Colour Palette.

### Guarantee

Standard 10 year manufacturer's warranty on structural and thermal performance. Coating guarantee with a possibility up to 40 years (depending on the type of coating and project-specific information). Project-specific guarantees are possible and upon request.

### Deliveries

Our deliveries from the Business Line are unloaded free of charge and are largely transported by road transport and are based on Lean and Green and Euro 6-7.

### Assembly instructions

Our installation instructions can be downloaded from our website or available from Cladding Point Technical Services. The 3-D models are included in the Tekla library: [www.tekla.com](http://www.tekla.com)

### Product name

Product name of our manufacturer AR panel for this product is S PIR (60-100mm) and CH PIR (120-200mm) is stated as such on the relevant certificates. Ask about the conditions and possible additional costs for the above-mentioned certifications.

**PREMIUM BETA-AR (KV) CARRIER** PIR hard foam (concealed and visible mounting)

Technical properties

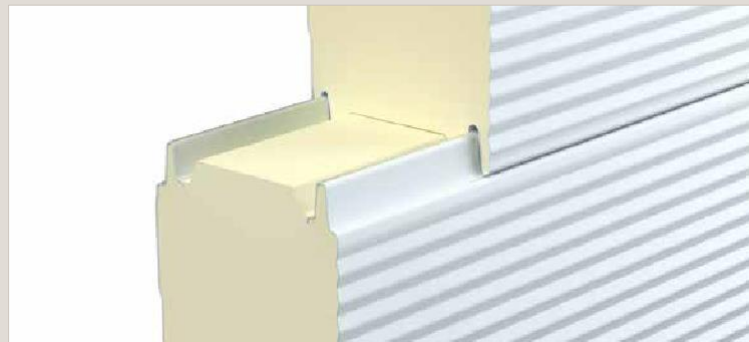
PREMIUM BETA-AR (KV) CARRIER	KV ❄️						
Thickness (mm)	60	80	100	120	140	160	200
Total panel weight (kg/m <sup>2</sup> )							
Outer panel thickness 0.6 mm	10,70	11,60	12,70	13,10	13,80	14,50	15,90
Inner panel thickness 0.5 mm							
Noise Reduction (R <sub>w</sub> (C,Ctr) dB)	~25 (-2;-4)	~25 (-2;-4)	~25 (-2;-4)	~24 (-2;-4)	~24 (-2;-4)	~24 (-2;-4)	~24 (-2;-4)
R <sub>c</sub> -value (m <sup>2</sup> .K/W), NTA 8800	2,81	3,86	4,88	5,92	6,93	7,95	9,97

Advice: horizontal mounting application.

Cross-section panel (thickness 120-200 mm)



Connection (visible confirmation, thickness 120 - 200mm)

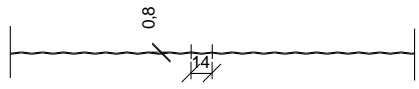


NB! Thickness 60-100 mm has a standard connection. The image shown is the KV version.

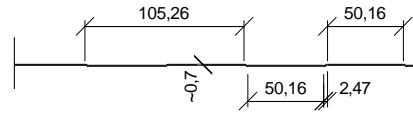
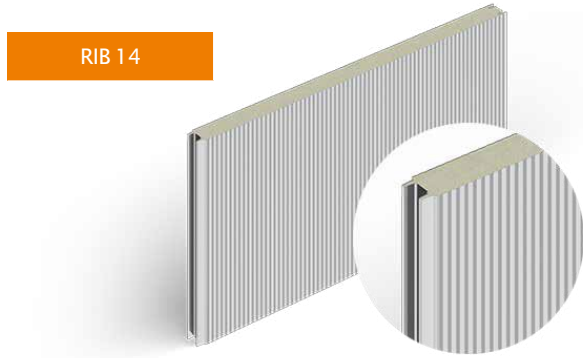
# Profiling

# PREMIUM ALPHA-AR FX CARRIER / BETA-AR (KV) CARRIER

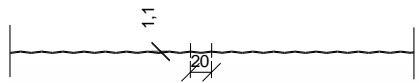
PIR hard foam (concealed and visible mounting)



RIB 14



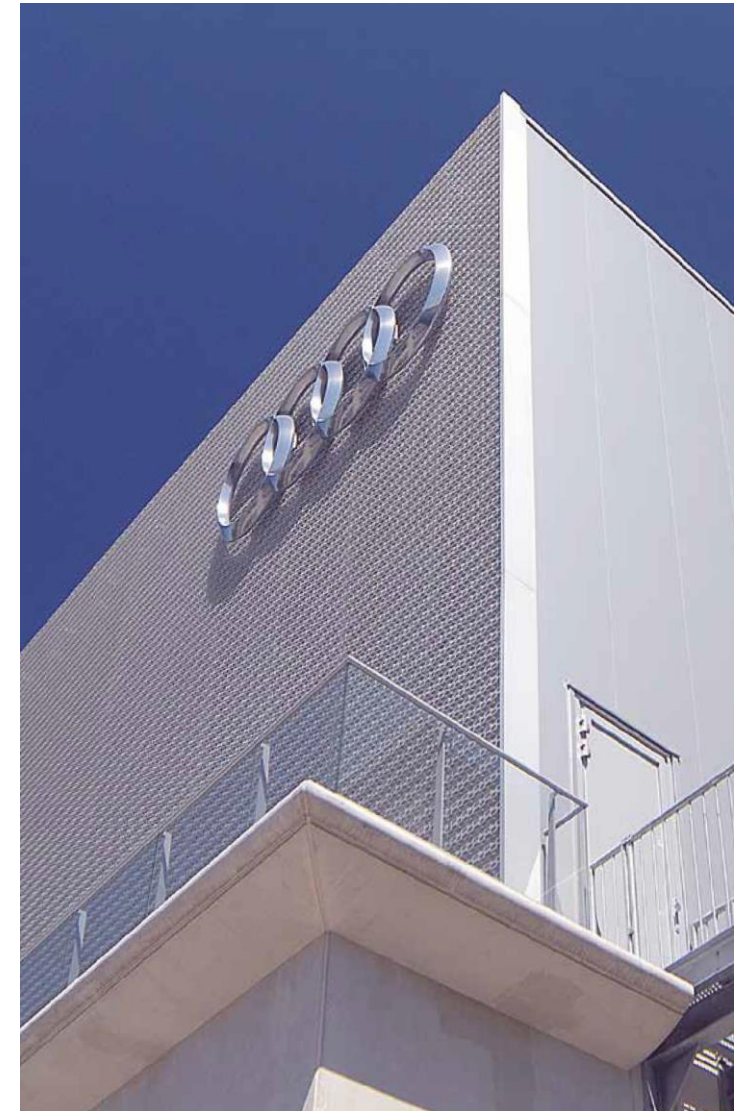
BOX



RIB 20



PROFILING	EXTERIOR	INTERIOR
Rib 14	YES	NO
Box	YES	YES
Rib 20	NO	YES



General points of interest Carrier system;

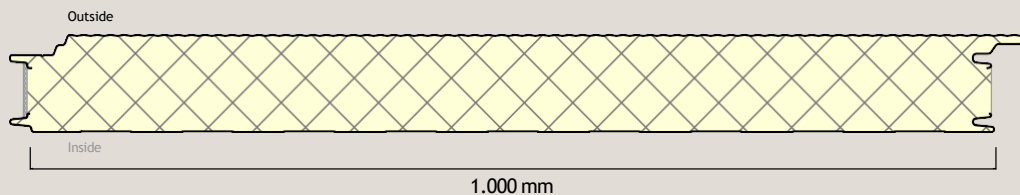
- Rail system must be placed transverse to the span direction of the panels. I.e. panels horizontally, rail system vertically and vice versa Preferably use omega profile due to strength and stiffness. Z and/or Hoed profiles can also be used, but have limitations compared to the omega profile
- C.o.c. distance of rail system and anchoring of rail system to the outer skin depending on project data
- Length of rail system approx. 3.0 m (due to temperature expansions). Rail system can be shared on mutual seam connection panels
- PE tape must be applied between the rail system and the outer skin. (due to scratching of the outer skin due to the expansion and contraction of the rail system under temperature load)
- The secondary facade finish may not transmit any loads to the outer skin. Example: making slotted holes in the rail system so that thermal movements can be absorbed
- Confirmation of secondary facade finish according to supplier's specifications.

Masonry: For masonry, it is advisable to install the omega profiles with centre-to-centre distance of 500 mm to be placed in connection with quantity of wall ties (to be determined by contractor).

Sandwich panels with load-bearing function for a secondary facade finish.

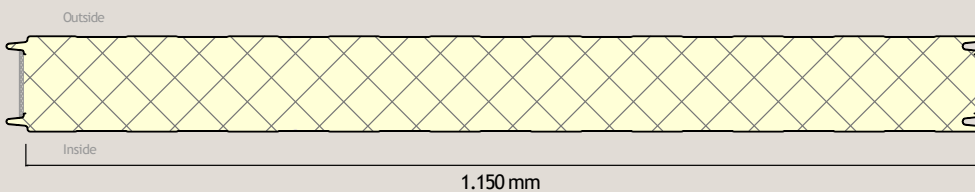
**PREMIUM ALPHA-AR FX CARRIER**

Advice: use vertical mounting

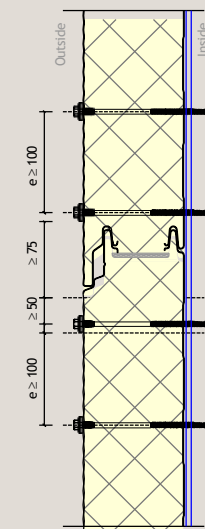


**PREMIUM BETA-AR CARRIER**

Advice: use horizontal mounting

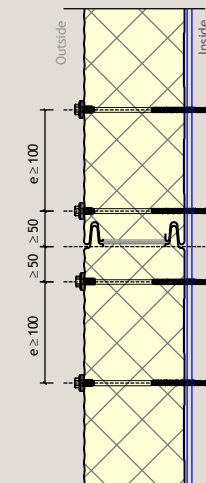


**Bevestiging**



**PREMIUM ALPHA-AR FX CARRIER**

Advice: use vertical mounting  
This product must be visibly attached where the aesthetic peel is applied.



**PREMIUM BETA-AR CARRIER**

Advies: use horizontal mounting



## Overview of installation and attachment of rail system on vertically mounted sandwich elements PREMIUM ALPHA-AR FX CARRIER

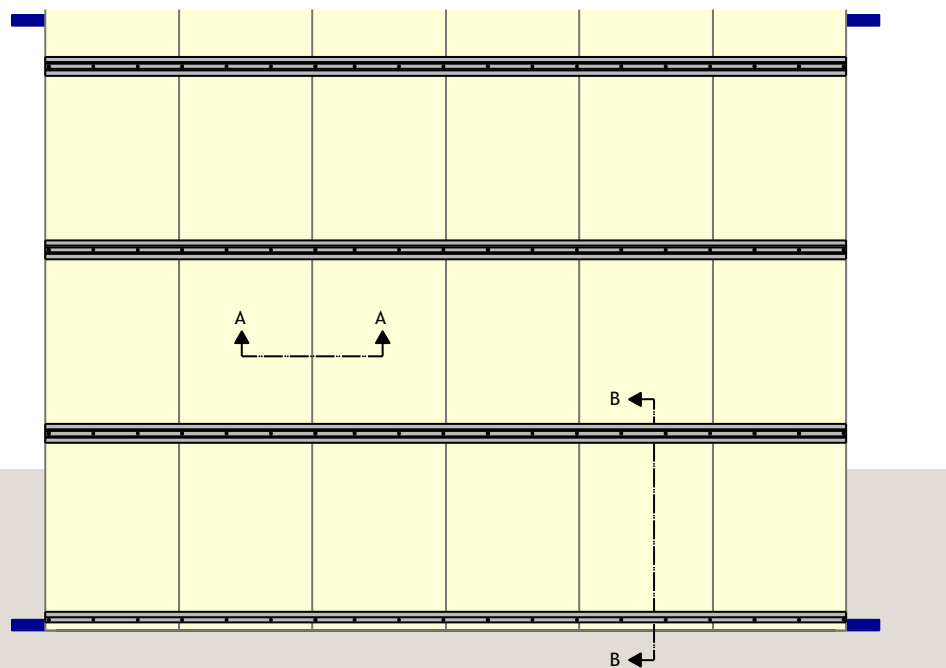
## PREMIUM ALPHA-AR FX CARRIER

PIR hard foam (concealed and visible mounting)

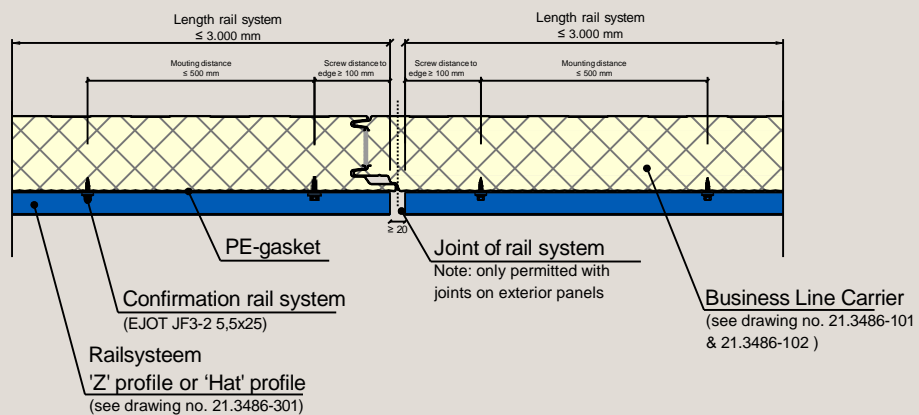
Conditions for secondary facade finishing:

Secondary facade cladding (incl. rail system) with a surface weight  $g_k < 20 \text{ kg/m}^2$ .

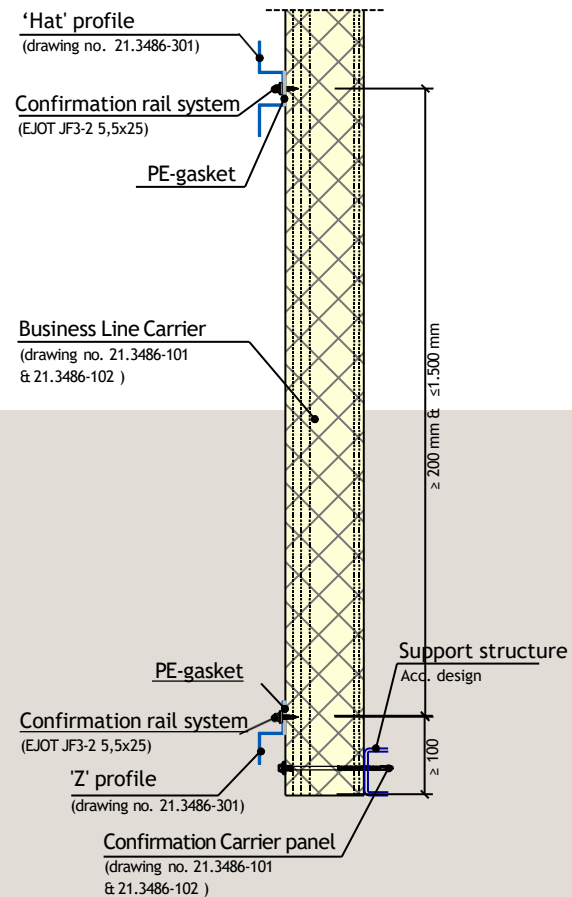
With the correct calculations, advice and installation for this product, you have almost complete freedom in your design. Consult our technical department for the application (different weight).



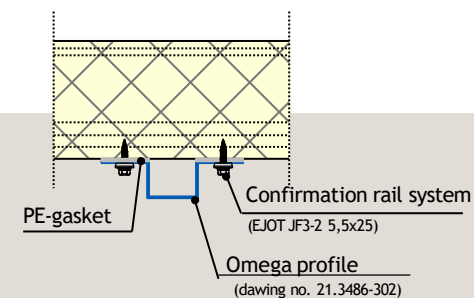
**Cross-Section A-A**



**Cross-Section B-B vertical**



**ALTERNATIVE RAIL SYSTEM - TYPE 3**



Overview of installation and attachment of rail system on horizontally mounted sandwich elements PREMIUM BETA-AR (KV) CARRIER.

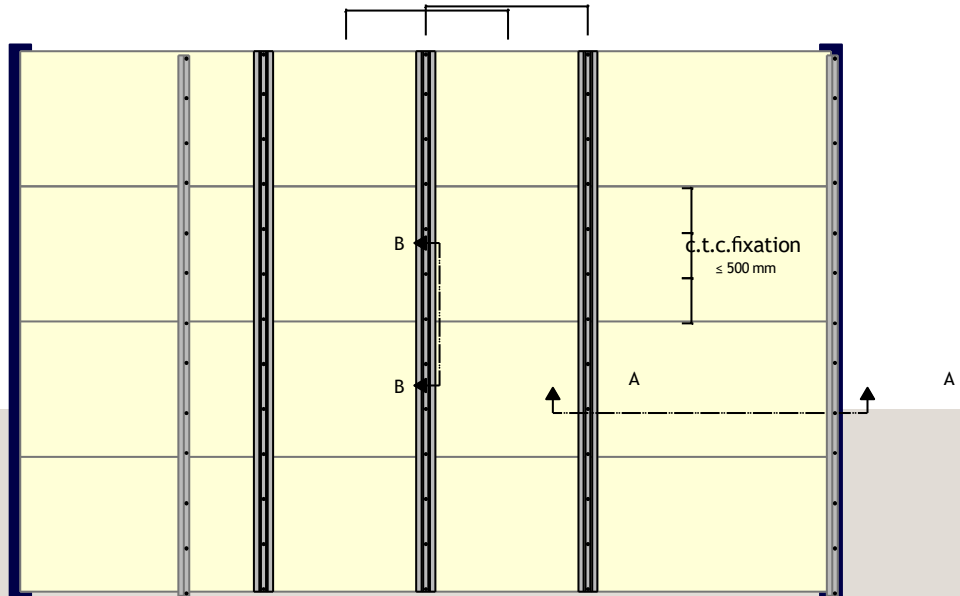
**PREMIUM BETA-AR (KV) CARRIER**

PIR hard foam (concealed and visible mounting)

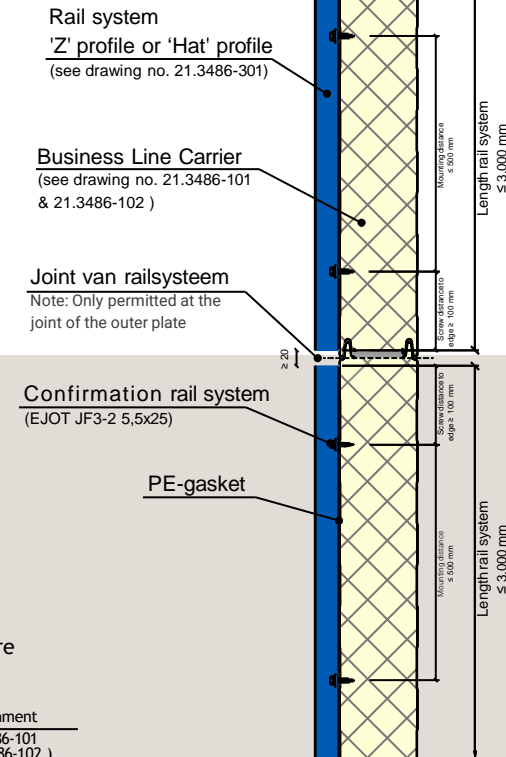
Conditions for secondary facade finishing:

Secondary facade cladding (incl. rail system) with a surface weight  $\leq 20 \text{ kg/m}^2$ . With the correct calculations, advice and installation for this product, you have almost complete freedom in your design. Consult our technical department for the application (different weight).

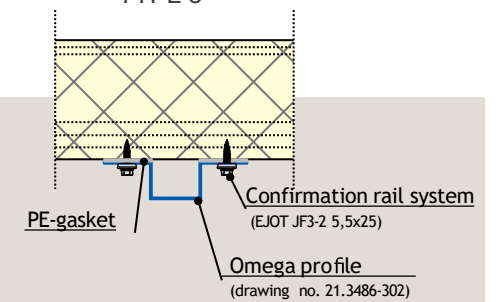
Centre to centre rail system  
 $\geq 200 \text{ mm} \ \& \ \leq 1500 \text{ mm}$



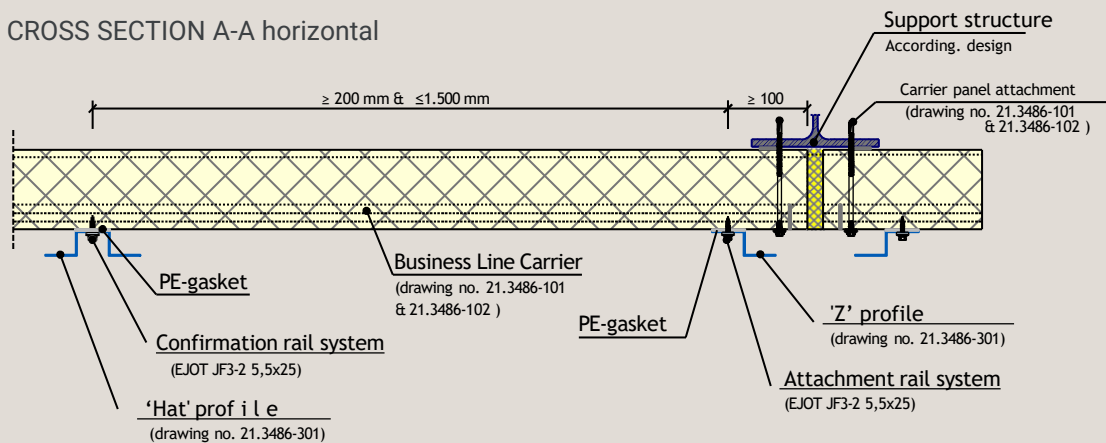
**Cross section B-B**



**ALTERNATIVE RAIL SYSTEM - TYPE 3**



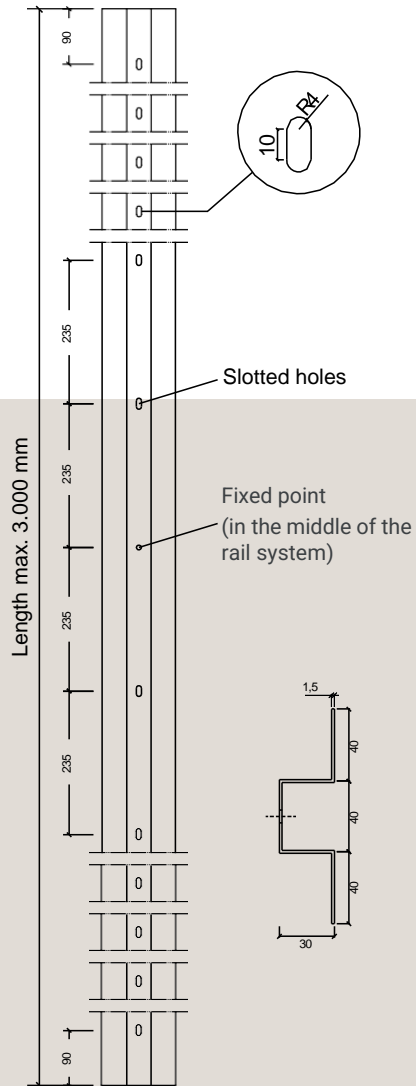
**CROSS SECTION A-A horizontal**



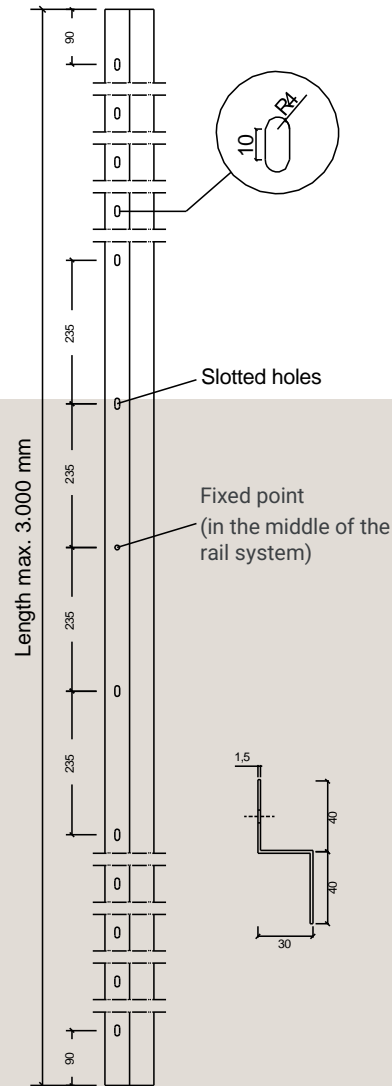
# PREMIUM ALPHA-AR FX CARRIER / BETA-AR (KV) CARRIER

PIR hard foam (concealed and visible mounting)

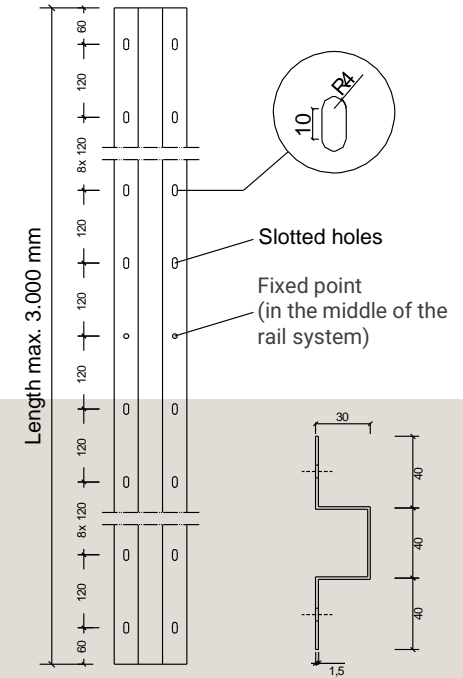
Rail system - type 1: 'Hat' profile  
Dimensions: 40/30/40/30/40 (t = 1.5)



Rail system - type 2: 'Z' profile  
Dimensions: 40/30/40 (t = 1.5)

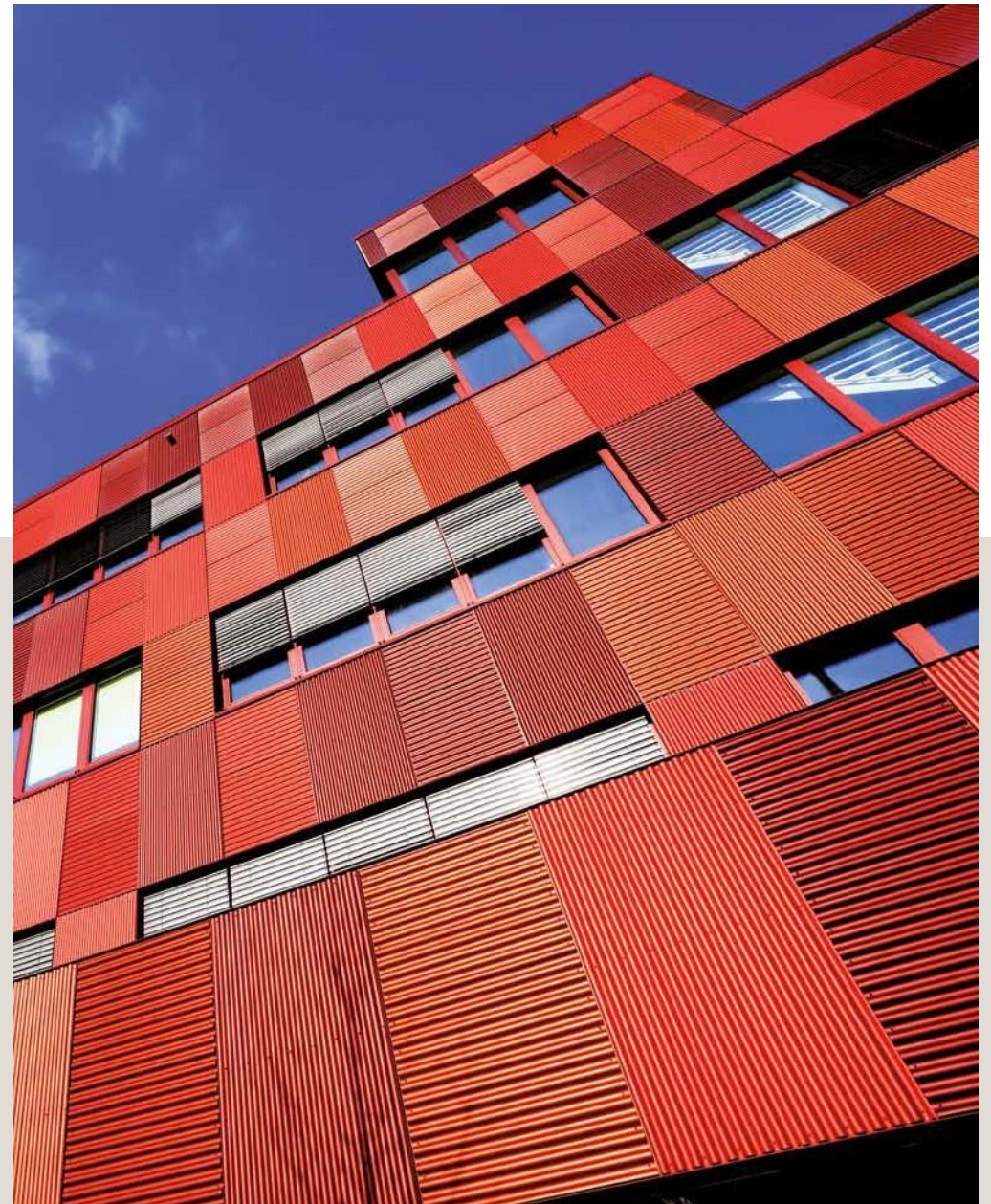


Rail system - type 3: 'Omega' profile  
Dimensions: 40/30/40/30/40 (t = 1.5)



## PREMIUM ALPHA-AR **FX** CARRIER / BETA-AR (KV) CARRIER

PIR hard foam (concealed and visible mounting)





**Want to know more?**

Cladding Point is continuously improving and testing its products. New test results are added on a regular basis. Should the desired fire resistance and any associated conditions apply to your project applies, are not included in the manual, please contact the technical department for the options and/or the latest status. In many cases we can offer you a suitable solution.

**Business Line**  
Sandwichpanelen  
*by Cladding Point*

Platinum Panel Systems LTD  
T: [+44 \(0\) 1744 747580](tel:+44201744747580)  
E : [Info@platinumpanelsystems.com](mailto:Info@platinumpanelsystems.com)

